



# The MSC and North Atlantic Right Whales

Marin Hawk

Fisheries Outreach Manager



## Who are we and what do we do?

- An international, not-for-profit NGO
- An ecolabel and certification program for sustainable fisheries
  - Third-party, independent assessments
- **Set and maintain credible standards:**
  - Fisheries Standard - sustainable wild fishing
  - Chain of Custody - product traceability
- **Recognise and reward sustainable fishing practices**





# The MSC Fisheries Standard

## Three Principles

1

Target stock

2

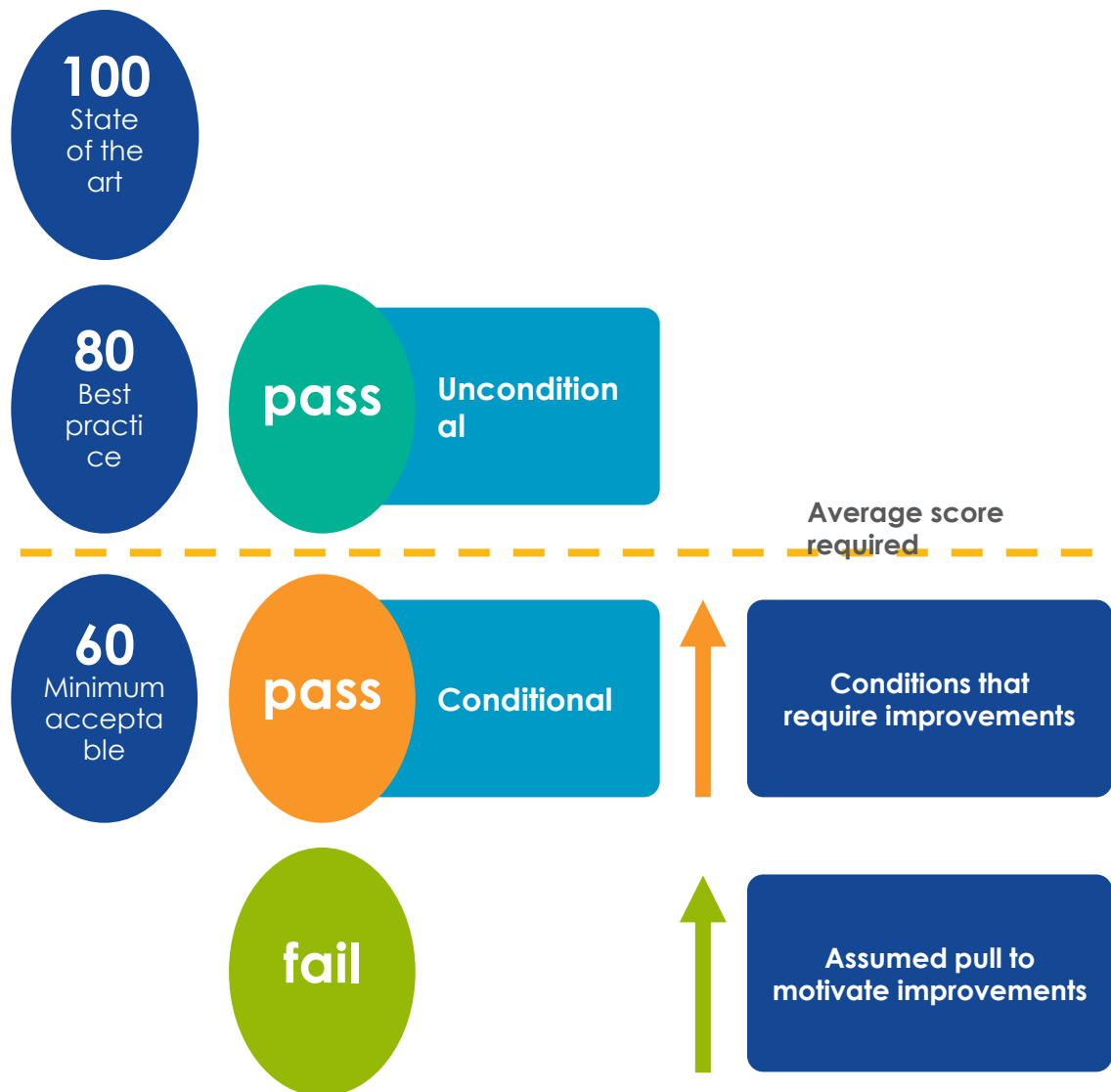
Ecosystem impacts

3

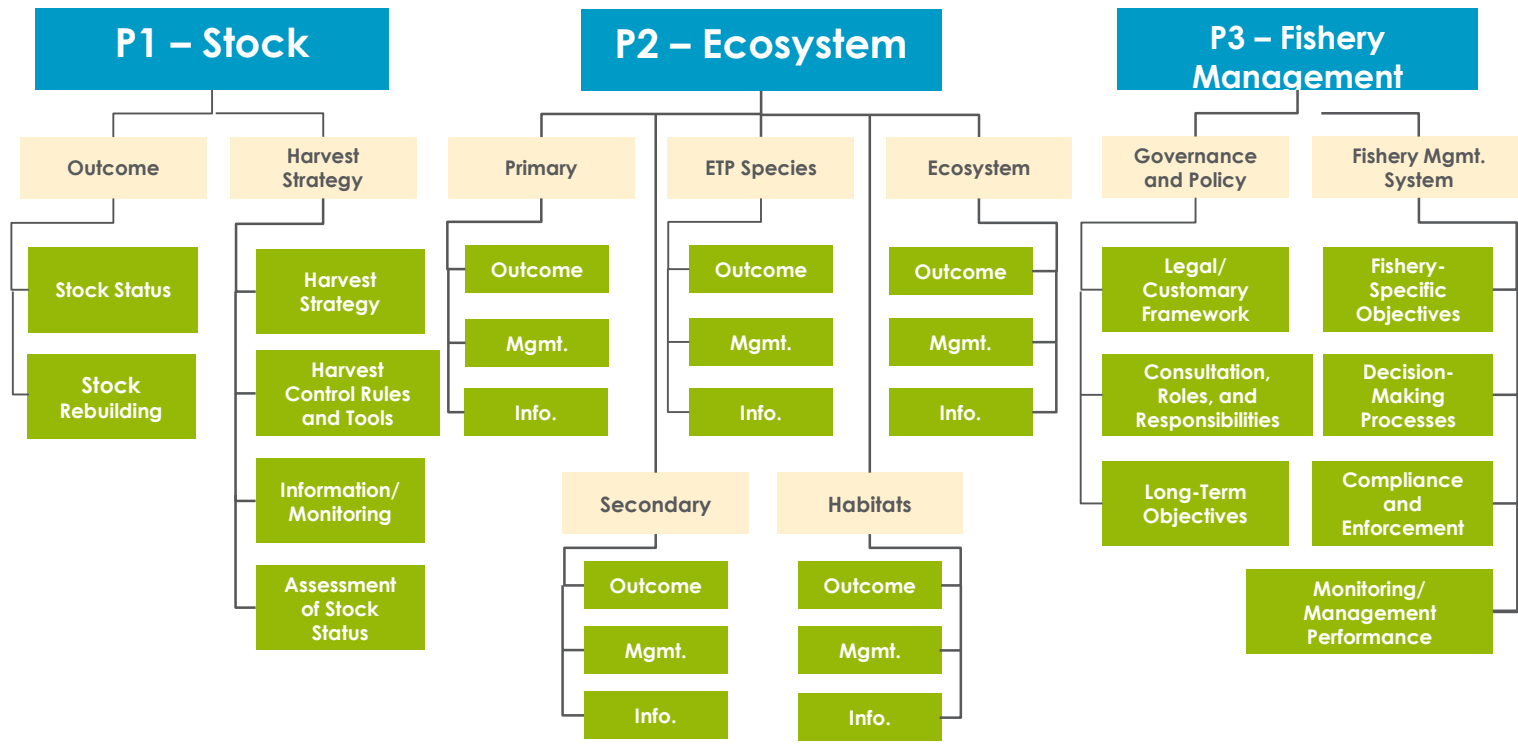
Effective management



# Scoring a Fishery



# The Complete Default Assessment Tree



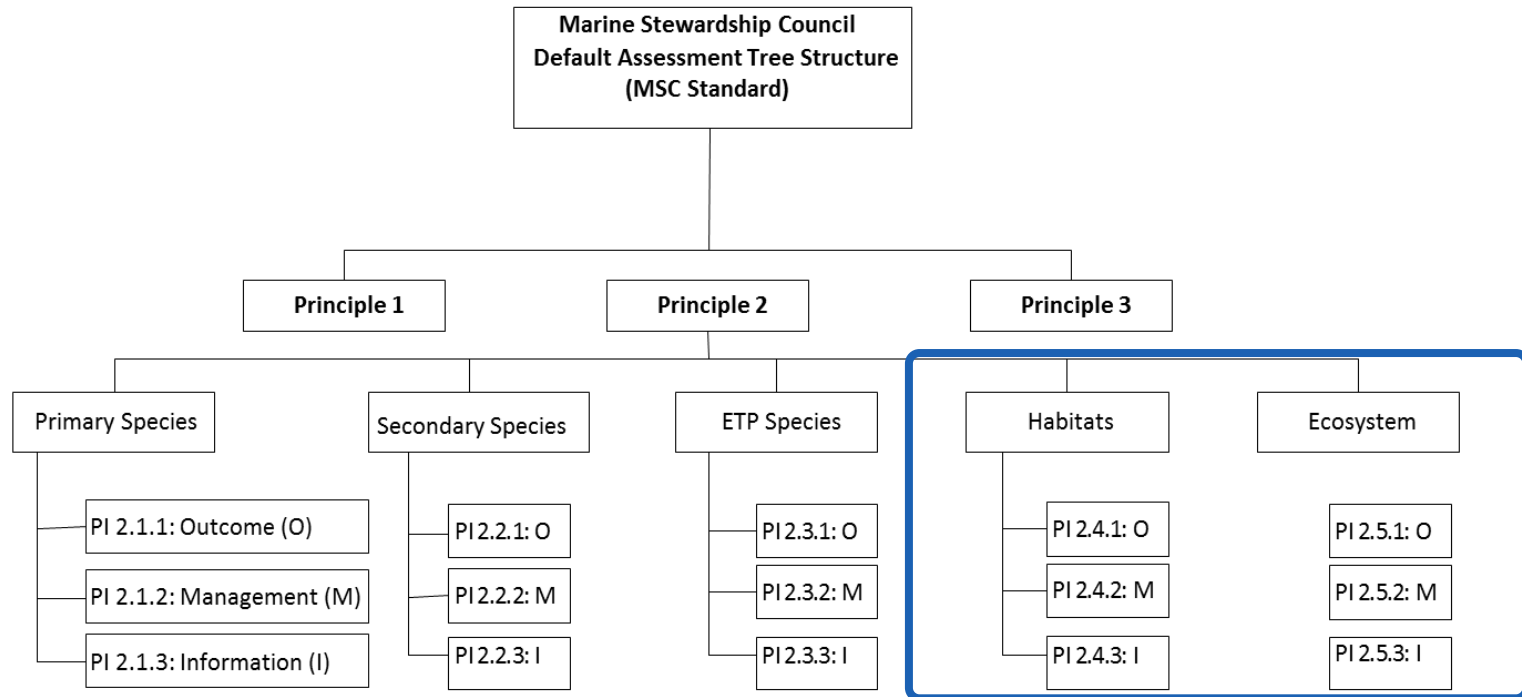
Each PI ≥60

Each Principle Average ≥80

# Default Assessment Tree: Principle 2



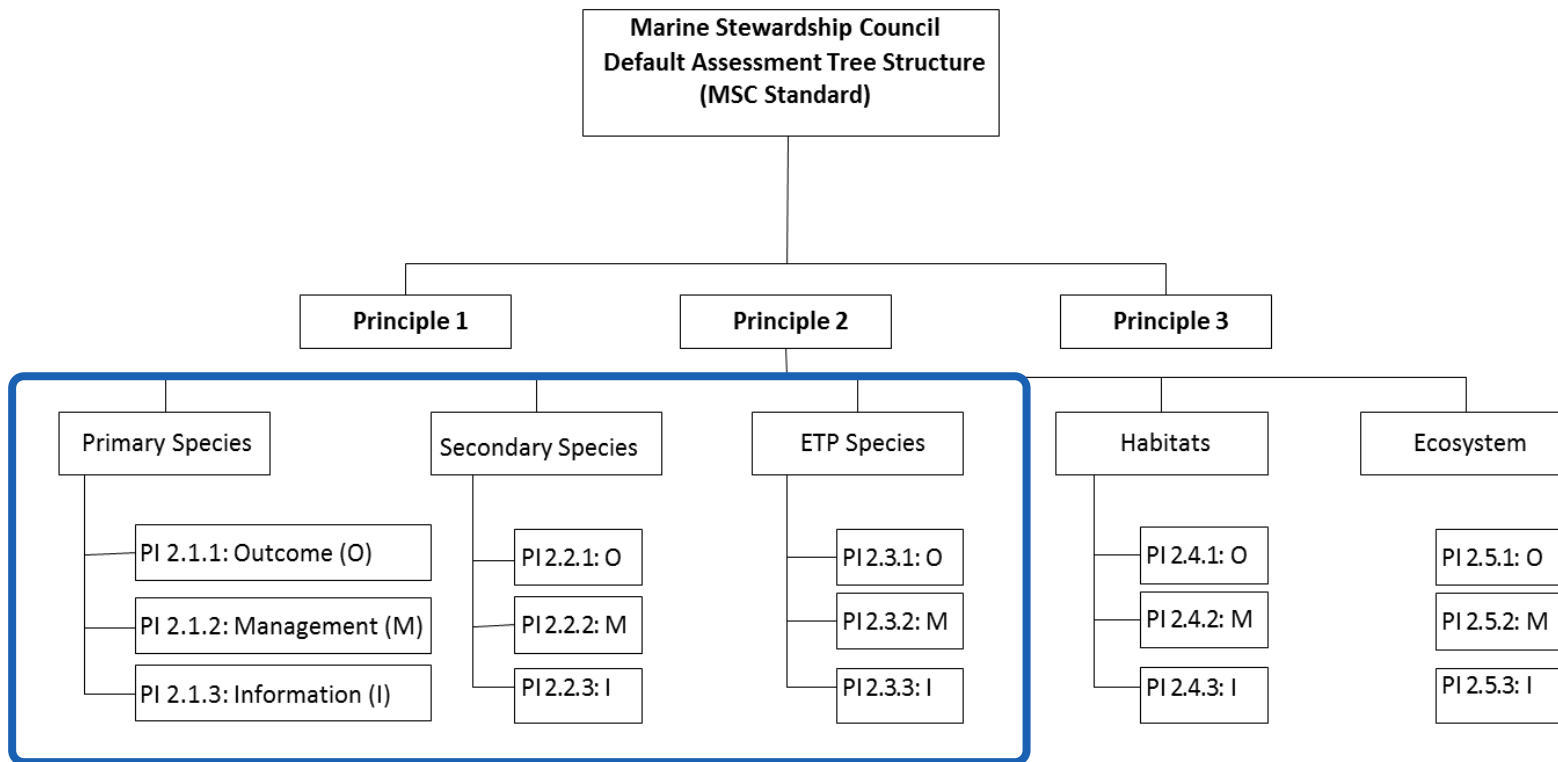
Principle 2 considers the impact of the fishery on a range of ecosystem components.



# Default Assessment Tree: Principle 2





Principle 2 considers the impact of the fishery on a range of ecosystem components.



# Overview - P2 Species components



	Overview	Outcome Status	Example
<b>Primary</b>	Only in scope species that are managed according to either target or limit reference points.	Primary species are <i>likely/highly likely/highly certain</i> above a Point of Recruitment Impairment (PRI).	Fish species with full stock asses 
<b>Secondary</b>	Not managed according to reference points and contains a large variety of species incl. out of scope species (amphibians, birds, reptiles and mammals).	Secondary species are <i>likely/highly likely/highly certain</i> above Biologically based limits.	Fish species managed according to precautionary TAC, stock assessment.  Out-of-scope non-ETP species.
<b>ETP Species</b>	Specific set of populations recognized by national legislation and specific international agreements.	Impacts on ETP species are either within national limits or direct effects on ETP species are not likely to hinder recovery.	Species listed under MMPA.

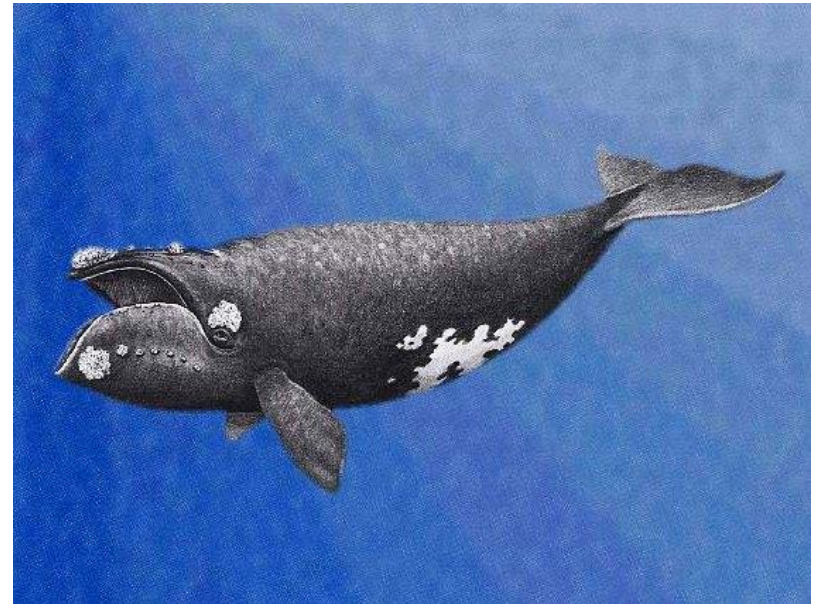




Right whales fall under ETP species category

Mammals are considered ETP if there is any national or international legislation to protect them.

- MMPA, ESA (US)
- CITES (international)
- IUCN Red List (international)



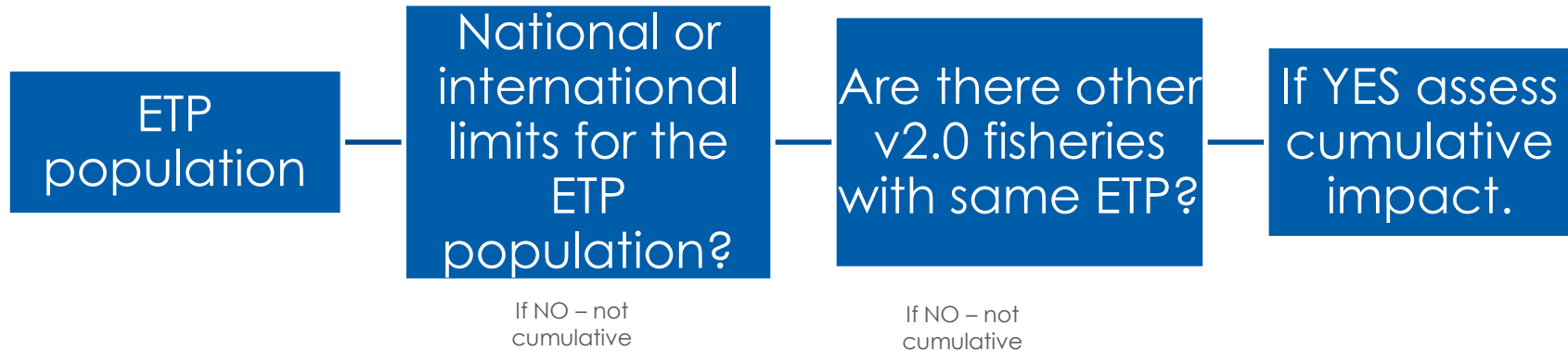
[This Photo](#) by Unknown Author is licensed under [CC BY-SA](#)



## Issues that are scored

- 1. Are the effects of the fishery within international or national limits?**
  - For US, this refers to PBR which is 1.
- 2. Is there a national management strategy in place to respond to impacts on ETP species and has this strategy been evaluated and determined to be effective?**
- 3. How likely are direct effects (including contact with gear) hindering the recovery of species?**
- 4. Is there adequate information to determine impacts of a fishery on an ETP species?**

# Cumulative Impacts - ETP



**Only applies to fisheries under version 2.0, so as fisheries are re-assessed they will transition to this version.**

# Lobster certifications in the Northwest Atlantic area



**Iles de la Madeleine\*** – LFA 22

**PEI** – LFA 24, 25 and 26a

**Gaspe** – LFAs 20a, 20b and 21

**BoF, SS and southern GoSL** - LFAs 23, 25, 26a and 26b; LFAs 27, 30, 31a, 31b, 32, 33; LFA 34; LFAs 35, 36, 37, 38

**Offshore** – LFA 41

**Maine\*** – LCMA 1 in US Gulf of Maine

**\* Indicates condition on NARW**

# Lobster certifications in the Northwest Atlantic area



Name	Expiry	Condition status	Comments
PEI	05-Nov-19	All closed	<ul style="list-style-type: none"> <li>- No specific NARW conditions</li> <li>- No NARW sightings in fishing area.</li> </ul>
Bay of Fundy, Scotian Shelf & SGOSL (NS+NB)	25-May-20	2 open	<ul style="list-style-type: none"> <li>- No NARW conditions.</li> <li>- One fishing area was temporarily closed in 2018 (LFA 38 off Grand Manan)</li> </ul>
Offshore	29-Jun-20	All closed	<ul style="list-style-type: none"> <li>- No NARW conditions</li> </ul>
Gaspé	04-Mar-20	All closed	<ul style="list-style-type: none"> <li>- No specific NARW conditions.</li> <li>- Fishing area was temporarily closed in June due to NARW sighting.</li> </ul>

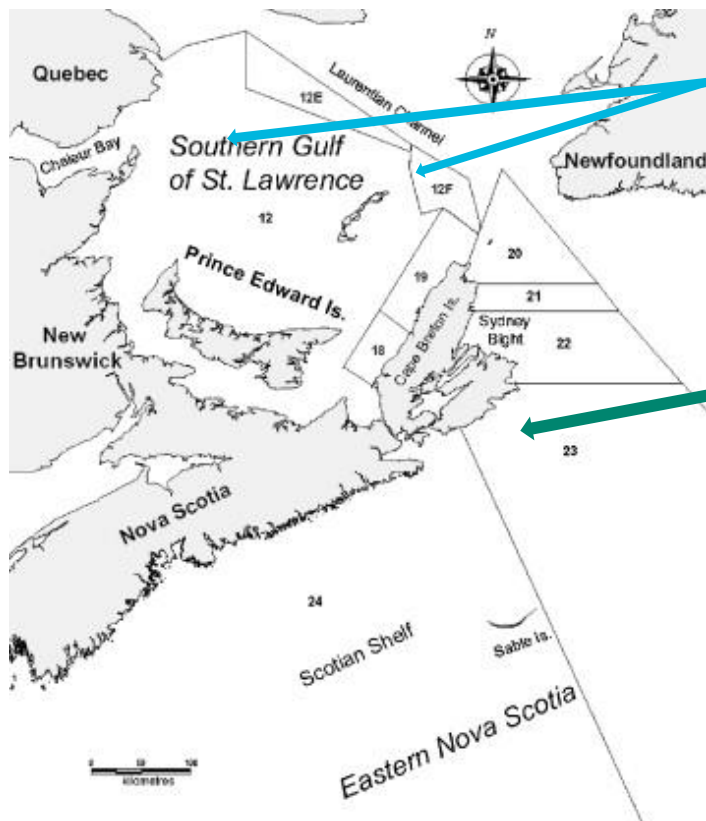
# Lobster certifications in the Northwest Atlantic area



Name	Expiry	Condition(s)	Comments
Iles de la Madeleine	11- Oct-23	1 - ETP (2.3.1) (new)	<ul style="list-style-type: none"> <li>- Re-certified Oct 2018.</li> <li>- New condition under FCR v2.0 due to combined effects of MSC UoAs on NARW</li> </ul>
Maine	12- Dec-21	4 open (3 behind target) 4 new at 1st audit on NARW	<ul style="list-style-type: none"> <li>- New NARW conditions</li> <li>- 1<sup>st</sup> audit (CAB, March 2018 – report May) resulted in new conditions</li> </ul>



## Snow Crab certifications in the Northwest Atlantic area



### Southern Gulf of St. Lawrence\*

– CFAs 12, 12E, 12F, 19 (incl 18)

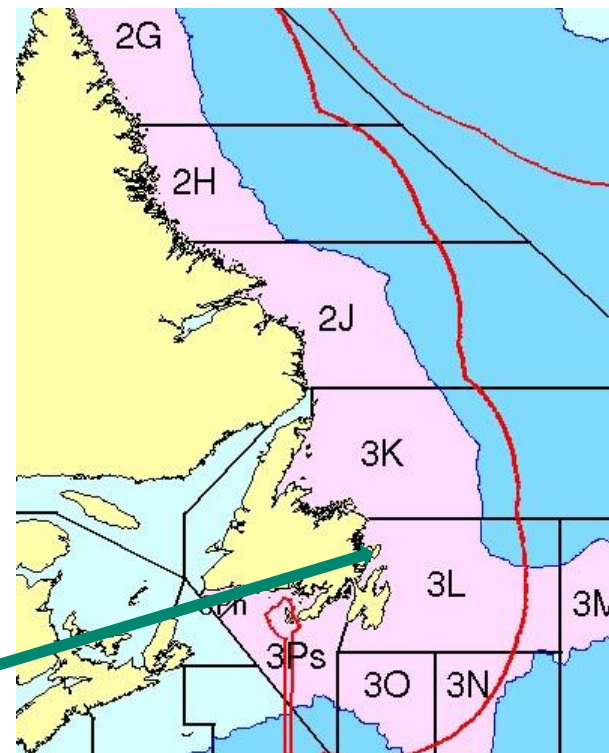
### Scotian Shelf\*

– CFA 20, 21, 22, 23, 24

### Newfoundland & Labrador\*

– 2J, 3K, 3L, 3Ps

\* Indicates condition on NARW





## Snow Crab certifications in the Northwest Atlantic area

Name	Expiry	Condition(s)	Comments
Southern Gulf of St. Lawrence	09-Oct-22	SUSPENDED Expedited audit held Nov 2017 to March 2018	<ul style="list-style-type: none"> <li>- Re-certified October 10, 2018</li> <li>- NARW impacts caused Expedited Audit and suspension announced March 2018</li> <li>- Audit to be held Nov 14-16, 2018 to review the Corrective Action Plan and conduct a regular surveillance audit</li> <li>- DFO measures in 2018 included a static and dynamic closures in the fishing area.</li> </ul>
Scotian Shelf	14-Sept-22	2 new NARW conditions	<ul style="list-style-type: none"> <li>- Re-certified September 14, 2018</li> <li>- 2 NEW NARW conditions at the time</li> <li>- NARW impacts caused Expedited Audit and new conditions on Pls 2.4.1 and 2.4.2</li> <li>- Upcoming audit will review progress on the new conditions.</li> </ul>
Newfoundland & Labrador	20-Aug-23	2 new on NARW (2.3.1 and 2.3.2)	<ul style="list-style-type: none"> <li>- Re-certified August 14, 2018</li> <li>- 2 new conditions under FCR v2.0 due to combined effects of MSC UoAs on NARW</li> </ul>





# Thank you.

**For more information contact:**

---

Marin Hawk

[Marin.hawk@msc.org](mailto:Marin.hawk@msc.org)